



assemblad

www.assemblad.com

March 2019

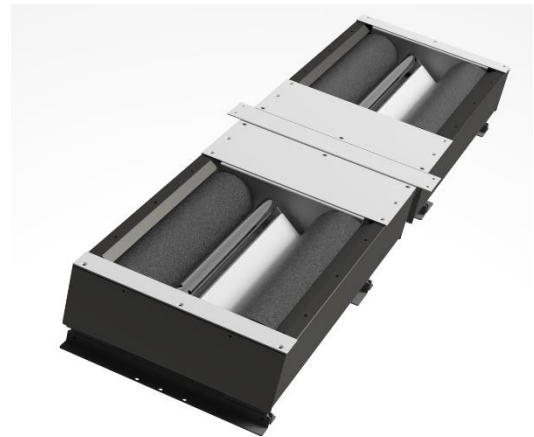
News Bulletin

F 2314 and F 2315 Split-Bench Roller Brake Testers for Cars and Light Commercial Vehicles

The new **Assemblad** Roller Brake Testers for cars and light commercial vehicles, available either for vehicles up to 3.5 t. (**F 2314** - Class IV) or for vehicles up to 7.5 t. (**F 2315** - Class VII), come in split bench configuration for versatile installation and inexpensive transportation.



In terms of installation, split benches are lighter to move and easier to handle; they can be accommodated on both sides of a pit just as they are, or re-assembled in a single bench by means of the connecting frame for recessed in-ground installations.



The split-bench **Assemblad F 2314** and **F 2315** roller brake testers are packed in a Euro pallet box which, with respect to the single bench structure, brings the advantage of standardised size with the consequence of easier handling and less expensive transportation costs, especially in case of long-distance freight.

2019 is the year of one of the most important trade shows worldwide, **AUTOPROMOTEC**, which will take place in Bologna, Italy, **May 22nd to 26th**



We are glad to invite you to visit us at our stand
Hall 30 stand D 42

For more information please email to info@assemblad.com or call +39 055 890485
If you don't want to receive this News Bulletin please notify to info@assemblad.com